 **EASTERN MAINE
MEDICAL CENTER**
EMHS MEMBER

**Unscheduled use of telemedicine to
support rural providers
("on demand")**

Jonathan P Wood, MD
Pediatric Critical Care
Senior Lead Physician for Pediatrics
Eastern Maine Medical Center
Bangor, ME


No disclosures

 **EASTERN MAINE
MEDICAL CENTER**
EMHS MEMBER

Together We're Stronger

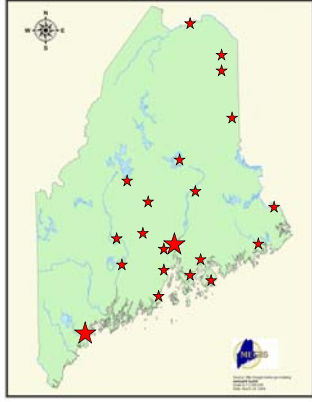
EMMC and Referral Area


- Tertiary referral center
 - 411 beds
 - Pediatrics: 18 general peds 6+ PICU 35 NICU
- Referral Area:
 - 18-20 hospitals - generally small communities
 - Variable pediatric capability/experience
- Large geographic area
- Long distances

 **EASTERN MAINE
MEDICAL CENTER**
EMHS MEMBER

Together We're Stronger

State of Maine



 **EASTERN MAINE
MEDICAL CENTER**
EMHS MEMBER

Together We're Stronger

Pediatric Inpatient Care at EMMC

- Full time pediatric intensivists since 2002
- Pediatric Sedation Service (2004)
- Full time pediatric hospitalists since 2007
- Transport Medical Control
 - LifeFlight of Maine
 - Meridian Star Critical Care Transport
- Phone consultation to the region



Together We're Stronger

The PICU at EMMC

- 6+ beds
- 3-4 full time pediatric intensivists
- Nursing:
 - Subgroup of adult critical care nurses with pediatric ICU training
- Broad pediatric subspecialty support
- FP residents; No fellows



Together We're Stronger

When the light came on...

- 2002 → 2004...
- 2 codes over the phone
- Transport decisions
 - Kids arriving sicker than expected
 - Kids arriving not as sick as expected
- Low frequency, high intensity events = !!!!!
- Sense of terror on the other end



Together We're Stronger

The challenges of Maine's geography...

...low population density...

...uncomfortable clinicians...

...long transport times...



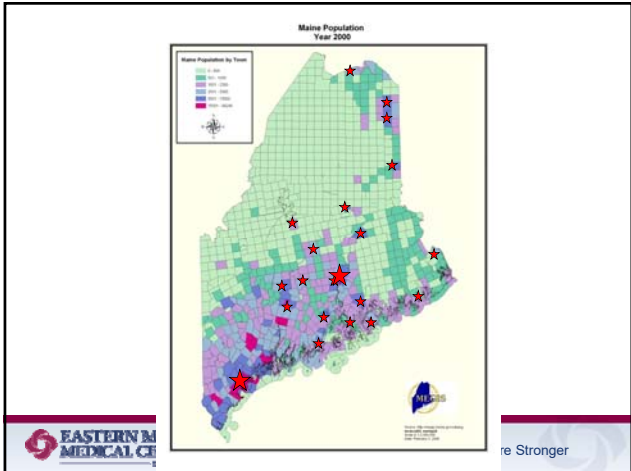
Together We're Stronger



2015 population and density

New England States				
State	Area (sq mi)	rank	Pop'n density (people/sq mi)	rank
Mass	7,800	45 th	871	3 rd
Vermont	9,217	43 th		
New Hampshire	8,953	44 th		
Connecticut	4,842	48 th	741	4 th
Rhode Island	1,034	50 th	1021	2 nd
MAINE	30,843 (20k)	39th	43 (66)	38th (31st)
North Dakota		17 th	10	47 th
Alaska		1 st	1	50 th

The Eastern Maine Medical Center logo and the slogan 'Together We're Stronger' are visible at the bottom.




And what about transport?

The Eastern Maine Medical Center logo and the slogan 'Together We're Stronger' are visible at the bottom.

In the US:

- 75% of children live within 40 miles of a Peds Critical Care provider
- Population-weighted - - within 33 miles



Distances to EMMC:

- Lincoln 47 miles
- Machias 75 mi
- Calais 90 mi
- Houlton 120 mi
- Fort Kent 191 mi

EASTERN MAINE MEDICAL CENTER
We're Stronger

Opportunity

- Pilot project – 2004/2005/2006
 - Eastern Maine Charities - EMHS - participating hospitals
- Partnered with EMMC Trauma Group
- Sites:
 - Inland Hospital (Waterville)
 - The Aroostook Medical Center (Presque Isle)
 - Pen Bay Medical Center (Rockport)

EASTERN MAINE MEDICAL CENTER
Together We're Stronger

Is this legit? Does it really work?

Effectiveness of Telemedicine in Replacing In-Person Evaluation for Acute Childhood Illness in Office Settings

KENNETH M. MCCONNOCHIE, M.D., MPH,
GREGORY P. CONNERS, M.D., MPH, MBA, ANNE F. BRAYER, M.D.,
JULIUS GOEPP, M.D., NEIL E. HERENDEEN, M.D., NANCY E. WOOD, BA., C.C.R.A.,
ANDREW THOMAS, DANIELLE S. AHN, and KLAUS J. ROGHMANN, Ph.D.

Telemedicine and e-Health (2006)

Differences in Diagnosis and Treatment Using Telemedicine Versus In-Person Evaluation of Acute Illness

Kenneth M. McConnochie, MD, MPH;
Gregory P. Connors, MD, MPH, MBA; Anne F. Brayer, MD;
Julius Goepf, MD; Neil E. Herendeen, MD; Nancy E. Wood, BA, CCRA;
Andrew Thomas, BA; Danielle S. Ahn, MD; Klaus J. Roghmann, PhD

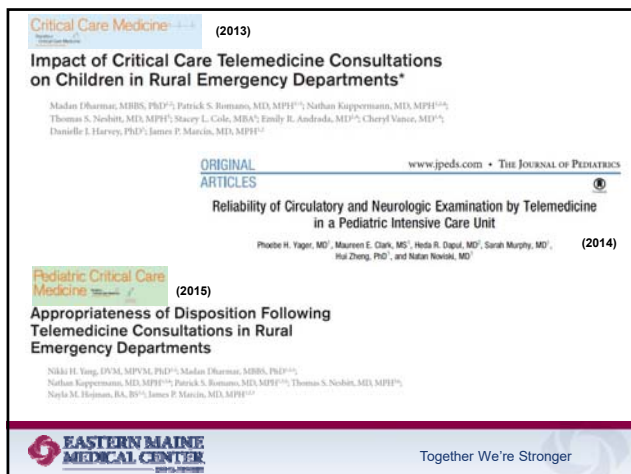
Ambulatory Pediatrics (2006)

EASTERN MAINE MEDICAL CENTER
Together We're Stronger

But what about in the setting of pediatric critical illness...?

We quickly became convinced of things that didn't show up in the literature until nearly 10 years later...

EASTERN MAINE MEDICAL CENTER
Together We're Stronger



Opportunity? Yes! Do it!

- Pilot project – 2004/2005/2006
- Sites:
 - Inland Hospital (Waterville)
 - The Aroostook Medical Center (Presque Isle)
 - Pen Bay Medical Center (Rockport)

But are these 3 truly the places that need us the most...?

EASTERN MAINE MEDICAL CENTER Together We're Stronger

Next steps...

- 2006 HRSA Grant
 - OAT (Office for the Advancement of Telehealth)
 - \$750,000 over 3 yrs for equipment and program development (PICU, Trauma, Home health)
 - Solidify IP connectivity
 - Tandberg "Interns"
- Our Focus:
 - Transport decisions (resource allocation)
 - Provider satisfaction (both ends)
 - Parental experience

EASTERN MAINE MEDICAL CENTER Together We're Stronger

24/7 Coverage = critical

2006:
 J.M. Hopwood Charitable Trust
 "Rapid Access Tele PICU to improve pediatric critical care services in rural Maine"

\$24,000 to **equip peds intensivists' homes** with high-definition telemed units

Later - - iPad and cell phone access

EASTERN MAINE MEDICAL CENTER Together We're Stronger

HRSA Grant Program Sites Year 1

- Blue Hill Memorial Hospital
- Mayo Regional Hospital (Dover-Foxcroft)
- Sebecook Valley Hospital (Pittsfield)
- Reddington Fairview General Hospital (Skowhegan)



Together We're Stronger

HRSA Grant Program Sites Year 2

- C.A. Dean Hospital (Greenville)
- Houlton Regional Hospital
- Millinocket Regional Hospital
- Mount Desert Island Hospital



Together We're Stronger

It starts to become really clear...

- 2007 Boston Telemed conference
 - MGH (Natan Noviski)
 - UVM (Barry Heath)
 - EMMC
- 2009: Clinical Investigation _____

Pediatric critical care telemedicine in rural underserved emergency departments*

Barry Heath, MD, FCCM; Richard Salerno, MD, MS; Amelia Hopkins, MD; Jeremy Hertzig, MD; Michael Caputo, MS



Together We're Stronger

Clinical Investigation _____

Pediatric critical care telemedicine in rural underserved emergency departments*

Barry Heath, MD, FCCM; Richard Salerno, MD, MS; Amelia Hopkins, MD; Jeremy Hertzig, MD; Michael Caputo, MS

- 63 calls / 10 ED's 2006-2008. 61 transfers, ave. distance 75 miles
- Technical problems 29% of calls
- 49% respiratory disease, 16% seizures, 10% infection, 8% tox/OD
- 12 averted intubations, 7 recommended intubations, 6 prior placement
- Provider surveys: 65% return by referring providers
 - Improved quality of patient's care: Intensivists: 89%, Referrers 88%
 - Quality of video: 92% for both
 - Quality of audio: 91% vs. 100%
 - Superior to telephone: 91% vs. 55%
 - Favorable inter-provider communication: 94% vs. 98%



Together We're Stronger

The Next Wave USDA Continuation Grant (2009)

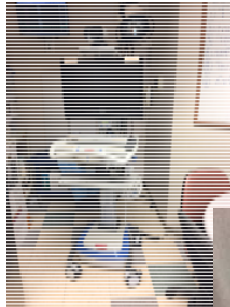
- Penobscot Valley Hospital (Lincoln)
- Calais Regional Hospital
- DownEast Community Hospital (Machias)
- Northern Maine Medical Center (Fort Kent)



Together We're Stronger

What does the machinery look like?

In the PICU:



At home:



Together We're Stronger

So - - what exactly happens when someone requests TelePICU?

- Page
- Call back and preview (if practical)
 - What am I dropping into?
- Connect
 - Evolution of EMMC's system
 - One-way call ("we call you")
 - Machines must be always charged, always on



Together We're Stronger

What happens after the connection?

- Fly on the wall ?
- "In control" ?
- Truly consultative ?
- Usually:
 - Combination of all the above!



Together We're Stronger

What does everyone have to do?

- ED staff places the machine in the room
 - Positioning is key
- Un-mute
- Consultant controls everything thereafter
 - Pan
 - Zoom
- Discussions with doc and/or parents
- Sensitive discussions (abuse, lethality, etc)



Together We're Stronger

What must be in place for this to work?

- Administrative support
 - High level on both ends
 - On the ground support at tertiary site
- Physician champion(s)
- Nursing champion(s)/support/coordination
- IT support
 - high level commitment on both ends
 - 24/7 staff (the stuff has to work NOW)
- Culture shift



Together We're Stronger

Challenges

- Lack of clear leadership and commitment
 - Innovators are not always good leaders
- Lack of IT appreciation of clinical realities
- Culture change on the near end (consultant)
 - “I’m too busy for this”
 - “What’s wrong with the telephone?”
 - “I’ll deal with it when they get here”
- Culture change on the far end (referrer)
 - “frontier medicine”
 - Big Brother +/- criticism or judgment



Together We're Stronger

Challenges (cont)

- Billable model
 - e.g. ICU consults: if transferred and admitted on the same day as the consult, can only bill one
(for pediatrics in Northern Maine, this is the overwhelming majority)
- Not-traditional ROI
 - If done well, very good for “relationship building”
 - How to measure? How to validate? How to gain support for further development?



Together We're Stronger

Call-to-call barriers

- Technical:
 - ~~Lack of local broadband access~~
 - ~~High traffic times with insufficient data transfer rates~~
 - Server directory is dysfunctional, can't find address
 - ~~Poor outgoing picture quality (home units)~~
 - Audio is not working/volume off or muted
- Systemic:
 - ~~Patient is in the "wrong room"~~
 - Transport sent prior to consult, lack of communication with historical avenues for consultation or transfer
 - "Too busy" or lack of familiarity
- Human:
 - Machine not on, not connected to internet
 - Machine is locked in a safe place
 - Lost the remote



Together We're Stronger

What sorts of cases do we see?

- **The** sickest kids
- Perceived sickest kids
- Not so sick kids, but provider or parental discomfort (very few of these)
- Many we feel we should see (or we *wish* we could see), but who don't call...
- 25-35 consults/year at the peak



Together We're Stronger

What medical advice do we offer?

- Much like the UVM experience
 - Able to do many things that we would *never* be able to do without TelePICU. (i.e. over the phone)
- e.g.
- Advise against intubation
 - Stress for intubation
 - Complex hemodynamic or neurologic decisions
 - Start terbutaline on a severe asthmatic



Together We're Stronger

What else do we offer?

- Peace of mind
- Confidence
- Reassurance
- "Misery loves company"
- Congratulations and praise
- Education
- Debriefing



Together We're Stronger

Early TelePICU Experience

Critical Illness Consults

- 5 y.o. in septic shock, hypoxic respiratory failure
- 18 mo. Hanging by drapery cord, prolonged CPR, (unsuccessful). Debriefing with referring staff by PICU physician
- 5 mo. Status epilepticus, intubated



Together We're Stronger

Code, Resuscitation, and its Aftermath

- 8 Codes involving telemedicine consultation in the first 5 years
- 6 Deceased in ER, 2 critical transport out
- Aged 5 weeks to 7 years
- Role of the “Impassionate Observer”
 - Tracking of Time, technical details
 - Context of likely cause or presenting history
 - Provision of “consensus” to a solo clinician
 - Debriefing/support/review to local ER staff



Together We're Stronger

TelePICU examples

- 10 mo. Ex-premie, critical airway, attempted tracheostomy for respiratory failure
- 3 mo. Cyanosis, shock: allowed transfer by EMS
- 3 y.o. drowning, low-temp, CPR (terminated)
- 16 y.o. ARDS, ETT, 90 minutes ICU direction awaiting transport
- 15 y.o. SMA, scoliosis, ETT for hypoxic RF
- 2 y.o. MVA roll-over trauma, CPR (terminated)



Together We're Stronger

TelePICU examples (cont)

- 7 mo. with hypoxic respiratory failure, ETT, difficult to ventilate: H1N1 positive
- 1 mo. Shock syndrome, global hypoxic injury with MODS, pressors, ETT, 2+ hour ER management awaiting CCT
- 3 wk old with bronchiolitis, impending respiratory failure
- 7 y.o. ATV traumatic brain injury, ETT



Together We're Stronger

A really bad night...

- 11 PM: 10 week old, co-sleeping with parent, found pulseless, 25 min EMS transport to ER, livido, unable to intubate, BVM, CPR 50 min. efforts discontinued.
- 0345 AM: 9 week old, co-sleeping with parent, found pulseless, 10 min for EMS, intubated, fluids, atropine, epi x 3, CPR additional 50 min. efforts discontinued.
- Events occurred at the same hospital



Together We're Stronger

Transfers to Other Facilities

- 4 y.o. with TGA, s/p arterial switch operation, presented after a fall, to ER in Cardiac arrest > cardioversion > asystole. CPR, trans-venous pacer wire placed, coordination of CCT directly to MMC for interventional cardiology.
- 2 mo. CNS injury, full arrest. Consult requested by CCT, report to accepting MD
- 3 mo. NICU-grad: apnea, lethargy, difficult airway, CCT consult, assistance with ventilation
- 8 yr old burn victim direct to Shriners (after 3 hrs management due to bed unavailability)



Together We're Stronger

Why a program like this is difficult to maintain

- Maintain the energy
- Maintain the administrative support
- Maintain (and upgrade) the equipment
- Maintain the credentialing
- The need to bring new people up to speed with a low frequency service
- And more...



Together We're Stronger

Conclusion

- It works
- It benefits those who use it
- It has very high provider satisfaction
- It has very high parental satisfaction
- Children who need pediatric critical care can often start to get it sooner...!



Together We're Stronger



**Unscheduled use of telemedicine to
support rural providers
("on demand")**

Jonathan P Wood, MD
Pediatric Critical Care
Senior Lead Physician for Pediatrics
Eastern Maine Medical Center
Bangor, ME