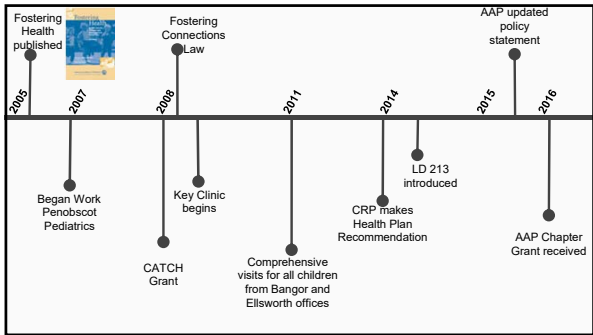


Health Care for Children in Foster Care In Maine

Adrienne W. Carmack, MD
October 15, 2016



CATCH Grant- 2008

Assessed access to medical care for children in foster care in the Bangor area.

Piloted a clinic to provide initial medical screens and comprehensive assessments



Fostering Connections to Success and Increasing Adoptions Act of 2008

(PL 110-351)

- Make reasonable efforts to place siblings together
- Notify adult relatives of child's removal from parents within 30 days
- Requires states to address educational stability
- Requires states to develop plan for oversight and coordination of health care services**

<https://www.childwelfare.gov/topics/systemwide/laws-policies/federal/fosteringconnections/>

PCHC Pediatrics Services
Resources FAQs Visiting Us

The Key Clinic

Providing Access to Medical Care & Opening Doors to a Healthy Future for Foster Children

When a child becomes a foster child, staff of Key Clinic work with the State of Maine Department of Health and Human Services (DHHS) to gather medical records from previous providers, hospitals, and clinics.

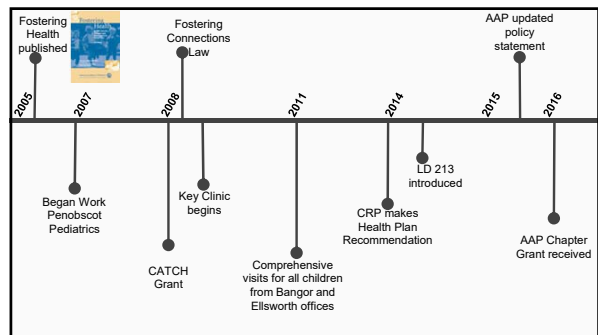
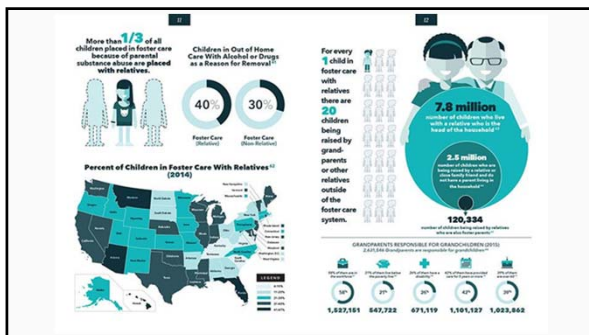
Staff at Key Clinic will schedule an appointment with our social worker to discuss concerns and gather social history.

The staff at the Key Clinic will schedule a Comprehensive Visit for all children in foster care to occur within 30 days.

<http://pediatrics.pchc.com/service/the-key-clinic/>

Key Clinic

- 951 foster children seen for Comprehensive Health Assessment
- Average Age 4.7 years
- 64% < 5 yr
- 44% Placed with Kin
- 41% Drug affected (DAB / NAS)



Maine Citizen Review Panel

- CRP assesses Maine's Child Protective Services and makes recommendations when necessary.
- Comprised of volunteer citizens; mandated under CAPTA
- Spring 2014: CRP work group develops recommendations for health care of children in foster care.

<http://www.childabuseactionnetwork.com/News/AnnualReports/maine-citizens-review-panel-recommendations-for-a-coordinated-health-plan-for-children-in-foster-care-48.html>

LD 213: An Act To Ensure the Comprehensive Medical, Dental, Educational and Behavioral Assessment of Children Entering State Custody

1. **Physical examination required.** The department shall ensure that a child ordered into its custody receives an appointment for a medical examination by a licensed physician or nurse practitioner within 48 2 working days after the department's custody of the child commences.


2. **Psychological assessment.** If the physician or nurse practitioner who performs a physical examination pursuant to subsection 1 determines that a psychological assessment of the child is appropriate, the department shall ensure that an appointment is obtained for such an assessment within 30 days of the physical examination.

3. **Medical, dental, behavioral and educational assessment.** The department shall obtain relevant records and ensure that a child ordered into its custody is referred for a comprehensive medical, dental, behavioral and educational assessment meeting the standards of a national academy of pediatrics within 30 days after the department's custody of the child commences.

<http://legislature.maine.gov/LawMakerWeb/summary.asp?ID=280055406>

LD 213

Passed in House 3/8/2016
 Passed in the Senate 3/9/2016
 Vetoed by Governor 3/29/2016
 Veto overridden in the Senate 3/29/2016
 Veto sustained in the House 3/30/2016

American Academy of Pediatrics 
 DEDICATED TO THE HEALTH OF ALL CHILDREN™

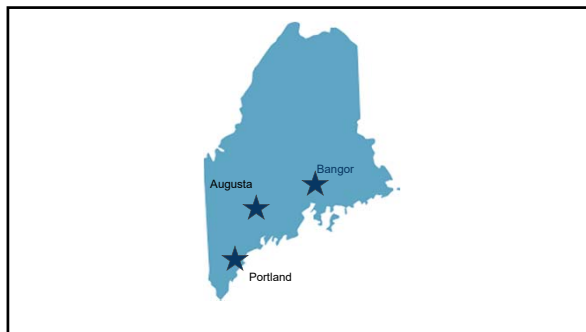
Maine Chapter

Health Care for Children and Youth in Foster Care Chapter Project

Maine Foster Care Committee

Members:
Pediatricians with foster care expertise (3)
General pediatrician (1)
AAP Chapter President

Meetings:
Two committee conference calls
One conference call with state leadership of Child Welfare Department



MAAP Foster Care Survey


Objective
Assess pediatric providers' awareness of health care needs of children in foster care
Determine the frequency and timeliness of current foster care assessments
Determine ability to accommodate rapid requests for visits
Use survey as a tool to educate providers and provide resources (using links)

40 responses, currently compiling results

82% of providers report that they are unfamiliar with the AAP recommendations or would need to reference them before administering care.

American Academy of Pediatrics

DEDICATED TO THE HEALTH OF ALL CHILDREN™



Maine Chapter

MAAP Foster Care Survey

The Maine Chapter of the American Academy of Pediatrics (AAP) is the recent recipient of a grant from the AAP Council on Foster Care, Adoption, and Kinship Care (COFCAKC): Health Care for Children and Youth in Foster Care Chapter Project.

Children and teens in foster care have a high prevalence of chronic medical, dental, mental health, developmental, and educational issues requiring they receive more frequent and detailed health monitoring than other children and teens. The Maine AAP is working with statewide partners to improve the health care of Foster Children in Maine.

The Maine AAP is utilizing this provider survey to assess the knowledge of providers and determine the frequency & timeliness of current care. We appreciate your feedback on these questions and hope you are able to utilize some of the information within the survey in your practice.

Did you know...?

- In 2014 there were 1,835 children in the custody of the state of Maine. In 2015, 679 children entered state custody.
- There are 16 local DHS offices in Maine. Find your [local office here](#).

1. Please select your specialty:

Educational Materials

Timelines
 Educate families and providers on timeline of care
 (Will be) Available on webpage

Medical Care Timeline: Foster Children in Maine

Providers' Resource

Child Enters Foster Care

Health Information Gathering * (0-10 Days)

Initial Medical Screen (10 Days)

- Acute visit with physician or nurse practitioner, identify the child's primary care provider, to identify acute illnesses and medical needs.
- Ensure foster family has necessary medications and medical equipment
- Schedule comprehensive health assessment

Comprehensive Health Assessment (CHA) (10-30 Days)

- Child Development Services referral made by DHHS if child is less than 3 years old.
- Pediatric Symptom Checklist: Administered by DHHS caseworker. If indicated a mental health referral is made. Results are shared with child's PCP.
- Three comprehensive health assessment clinics in Maine
- Child is evaluated by a physician or nurse practitioner as well as a psychologist or social worker.
- Complete physical exam
- Comprehensive review of health records
- Developmental and behavioral health evaluations
- Creation of a health plan and necessary referrals to specialists or other providers made
- Copy of comprehensive health assessment sent to child's primary care provider and DHHS caseworker.

Ongoing Care (30 Days)

- Establish a medical home for the child.
- Dental visits every 6 months after the child is 1 year old.
- Vision screen 1 time per year
- Developmental and behavioral health services and therapies as needed
- Well child exams as recommended by the American Academy of Pediatrics
- Continues communication and follow up with care providers

Immunizations Updated. Lab work as recommended: lead, hemoglobin, hepatitis panel, HIV and PPD if indicated.

* Health information should be gathered by a care manager prior to the CHA. This should include authorization to treat, affidavit, preliminary child protection order, birth record, prescription history, MaineCare claims form, relevant records from EMR and HealthInfoNet if available, requests for medical records from other providers, and immunization record from birthfact.

Source: Fostering Health: Health Care for Children and Adolescents in Foster Care. American Academy of Pediatrics, 2005.

Medical Care Timeline: Foster Children in Maine

Foster Families' Resource

Child Enters Foster Care

Health Information Gathering * (0-10 Days)

Initial Medical Screen (10 Days)

- The initial visit with a physician or nurse practitioner, identify your child's primary care provider, to identify any current illnesses and medical needs that need to be addressed immediately.
- Ensure foster family has necessary medications and medical equipment
- Schedule comprehensive health assessment

Comprehensive Health Assessment (CHA) (10-30 Days)

- A DHHS caseworker will automatically make a referral for all children under the age of 3 years old to be seen by Child Development Services.
- A mental health screening, PSC-17, will be done for all children. The results should be shared with the primary care provider
- Three comprehensive health assessment clinics in Maine
- Child is evaluated by a physician or nurse practitioner as well as a psychologist or social worker.
- Complete physical exam
- Thorough review of health records
- Developmental and behavioral health evaluations
- Creation of a health plan and necessary referrals to specialists or other providers made
- Copy of comprehensive health assessment sent to child's primary care provider and DHHS caseworker.

Ongoing Care (30 Days)

- Establish a primary care provider for the child.
- Dental visits every 6 months after the child is 1 year old
- Vision screen 1 time per year
- Developmental and behavioral health services and therapies as needed
- Well child exams as recommended by the American Academy of Pediatrics
- Continues communication and follow up with care providers

Immunizations Updated. Lab work as recommended: lead, hemoglobin, hepatitis panel, HIV and PPD if indicated. Foster children are often behind on immunizations. You should be prepared to have immunizations and blood work done at the CHA.

* The child's health information and records should be gathered by a care manager prior to the CHA. This will allow the provider to review the records prior to meeting with you and your child.

Source: Fostering Health: Health Care for Children and Adolescents in Foster Care. American Academy of Pediatrics, 2005.

Educational Materials

Timelines
 Educate families and providers on timeline of care
 (Will be) Available on webpage
 Resource Webpage for the MAAP site

American Academy of Pediatrics
DEDICATED TO THE HEALTH OF ALL CHILDREN™
Maine Chapter

About Us - Advocacy - Conferences - Donate/Join - For Families - For Providers

FOR FAMILIES - RESOURCES - FOSTER CARE

Foster Care

The Maine Chapter of the AAP is the recent recipient of a grant from the AAP- Health Care for Children and Youth in Foster Care Chapter Project

Children and teens in foster care have a high prevalence of chronic medical, dental, mental health, developmental, and educational issues requiring that they receive more frequent and detailed health monitoring than other children and teens. The Maine AAP is working with statewide partners to improve the health care of Foster Children in Maine.

Healthy Foster Care America (HFCA) is an initiative of the AAP and its partners to improve the health and well-being outcomes of children and teens in foster care.


HealthyChildren.org

Resource Locator

For provider and family specific resources, click on your county in the map. Local, state, and national resources will be shown.

Resource Locator

For provider and family specific resources, click on your county in the map. Local, state, and national resources will be shown.



Washington County Resources

Adoptive and Foster Families of Maine
Adoptive and foster families of Maine provide support and resources for adoptive, foster, and kinship families. Resources include education, training, and guidance.

DHHS Office - Calais
Calais DHHS Office Contact
392 South Street
Calais, ME 04819
454-9000 or 1-800-652-1400

DHHS Office - Machias
Machias DHHS Office Contact
38 Prescott Drive
Machias, ME 04848
255-2000 or 1-800-452-7846
For other offices, visit the link to the DHHS webpage.

Information for Grandfamilies - Kinship Care
F.A.C.T., Families and Children Together, has compiled a guide of resources for nannies, uncles, grandmothers and other family members caring for kids. This document includes information about support services as well as helpful tips.

Educational Materials

Timelines
Educate families and providers on timeline of care
(Will be) Available on webpage

Resource Webpage for the MAAP site

Presentations
Foster Parents: Spring Conference at AFFM
Child Welfare Case Workers: DHHS training
Medical Providers: Maine Chapter conference (fall and spring)

"Tips for Foster Parents: Healthcare and Navigating the System" Handout

Chapter Grant: Initial proposed project, including goals and objectives

- 1) Reinforce established relationships with private and public partners- e.g., MaineCare, OCFS, etc.
- 2) Establish a Maine Chapter of the AAP Foster Care Committee to collaborate with the Maine state agencies and medical practices throughout the state
- 3) Develop, send, and analyze a provider survey to determine the frequency & timeliness of current foster care assessments and ability to accommodate rapid requests for acute visits
- 4) **Assure that every child has an initial evaluation within 72 hours of entering foster care**
- 5) **Develop a documentation template for an initial assessment that aligns with 99204 level billing code**
- 6) **Increase provider and stakeholder awareness of the value of the 72 hour assessment as well as the Comprehensive Health Assessment**
- 7) **Improve awareness of comprehensive health assessment services available throughout the State, including:**
 - i) Spurwink, PREP Clinic and Child Abuse Evaluation program
 - ii) Edmund N Ervin Pediatric Center
 - iii) Key Clinic, Penobscot Community Health Center
- 8) Collaborate with the OCFS to create a standard comprehensive health assessment (CHA) and ensure that children in all parts of the state have access to an assessment
- 9) **Assure that every child receives a comprehensive evaluation within 30 days of entering foster care**
- 10) **Facilitate the gathering of medical records of Foster Children**
- 11) **Facilitate coordination of sharing medical information while in foster care**
- 12) **Develop a negotiated rate with Medicaid (MaineCare) and OCFS for such services**
- 13) **Create a website and social media sites to aid in the education of Maine's foster families, child welfare workers and medical providers about the importance of early medical care, and comprehensive assessments**
- 14) **Submit grants, working with OCFS, to help sustain the 72 hr and comprehensive assessments for every child entering foster care**

Resources

- Adoptive and Foster Families of Maine <http://affm.net>
- Fostering Connections to Success and Increasing Adoptions Act of 2008 <https://www.childwelfare.gov/topics/systemwide/laws-policies/federal/fosteringconnections/>
- Maine Citizen Review Panel health plan recommendations <http://www.childabuseactionnetwork.com/News/Annual-Reports/maine-citizens-review-panel-recommendations-for-a-coordinated-health-plan-for-children-in-foster-care-48.html>
- AAP Policy Statement <http://pediatrics.aappublications.org/content/early/2015/09/22/peds.2015.2655.abstract>
- Healthy Foster Care America <https://www.aap.org/en-us/advocacy-and-policy/aap-health-initiatives/healthy-foster-care-america/Pages/Health-Systems.aspx>
- Adopt US Kids www.adoptuskids.org
- Center for Youth Wellness www.centerforyouthwellness.org
- Kids Count Data Center www.datacenter.kidscount.org
- Foster America www.foster-america.org
- Maine AAP www.maineapp.org

Additional Resources


The image shows two book covers side-by-side. The left cover is blue and white, titled "Helping Foster and Adoptive Families Cope With Trauma" and features the American Academy of Pediatrics logo. The right cover is yellow and blue, titled "Fostering Health" and features the American Academy of Pediatrics logo and a photograph of children.

<https://www.aap.org/en-us/advocacy-and-policy/aap-health-initiatives/healthy-foster-care-america/Documents/Guide.pdf>

<https://www.aap.org/en-us/advocacy-and-policy/aap-health-initiatives/healthy-foster-care-america/Pages/Fostering-Health.aspx?tagtag=81&tagid=00000000-0000-0000-0000-000000000000&articleid=00000000-0000-0000-0000-000000000000>

Thank you!

A photograph of a rocky coastline with a large tree in the foreground and a small stream flowing through the rocks.

 @MeAAP_FC

http://twitter.com/meaap_fc