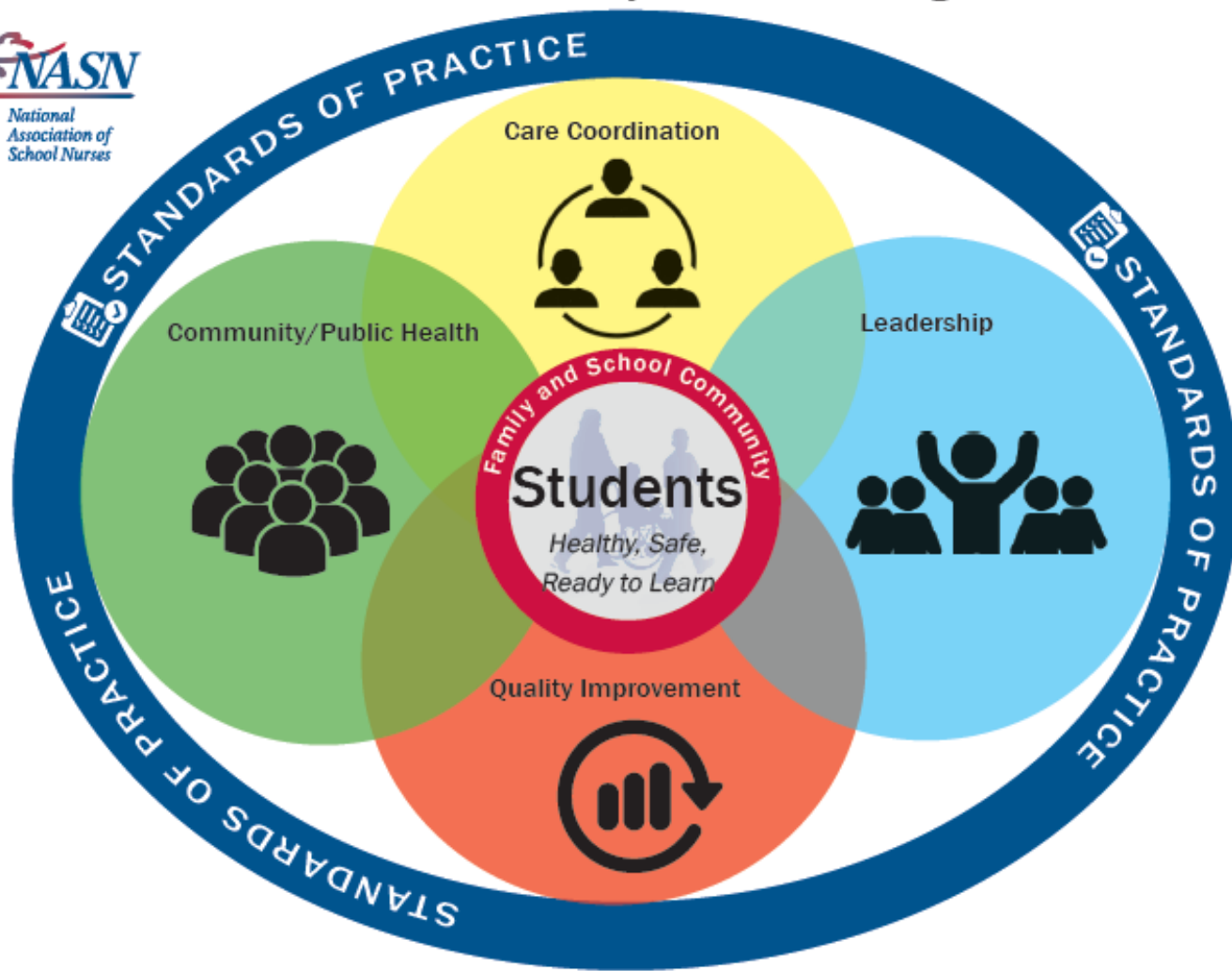




Covid-19 Pandemic: From a School Nurse Perspective

Emily Poland, MPH, RN
School Nurse Consultant
September 27, 2020

Framework for 21st Century School Nursing Practice™



© National Association of School Nurses, 2015

BETTER HEALTH. BETTER LEARNING.™

Rev. 10/6/16



Standards of Practice

- Clinical Competence
- Clinical Guidelines
- Code of Ethics
- Critical Thinking
- Evidence-based Practice
- NASN Position Statements
- Nurse Practice Acts
- Scope and Standards of Practice



Care Coordination

- Case Management
- Chronic Disease Management
- Collaborative Communication
- Direct Care
- Education
- Interdisciplinary Teams
- Motivational Interviewing/ Counseling
- Nursing Delegation
- Student Care Plans
- Student-centered Care
- Student Self-empowerment
- Transition Planning



Leadership

- Advocacy
- Change Agents
- Education Reform
- Funding and Reimbursement
- Healthcare Reform
- Lifelong Learner
- Models of Practice
- Technology
- Policy Development and Implementation
- Professionalism
- Systems-level Leadership



Quality Improvement

- Continuous Quality Improvement
- Documentation/Data Collection
- Evaluation
- Meaningful Health/ Academic Outcomes
- Performance Appraisal
- Research
- Uniform Data Set



Community/ Public Health

- Access to Care
- Cultural Competency
- Disease Prevention
- Environmental Health
- Health Education
- Health Equity
- Healthy People 2020
- Health Promotion
- Outreach
- Population-based Care
- Risk Reduction
- Screenings/Referral/ Follow-up
- Social Determinants of Health
- Surveillance

ASCD & CDC. (2014). *Whole school whole community whole child: A collaborative approach to learning and health*. Retrieved from <http://www.ascd.org/ASCD/pdf/siteASCD/publications/wholechild/wsc-a-collaborative-approach.pdf>

School Nursing in Remote Learning

Care Coordination

- Chronic disease management
- Collaborative communication
- Update training materials for staff

Leadership

- Monitor emerging disease information; share with district staff
- Update health protocols

Quality Improvement

- Data collection
- Consider student supports/outcomes
- Challenges/opportunities

Community/ Public Health

- Risk reduction (mitigation)
- Illness screening
- Identify community resources

Standards of Practice

- Know your Nurse Practice Act
- Scope of practice
- Legal requirements

Summer Planning

- Graduation and Summer School Guidance
 - Celebrate achievements of students
 - Limits on in-person gatherings
- PPE



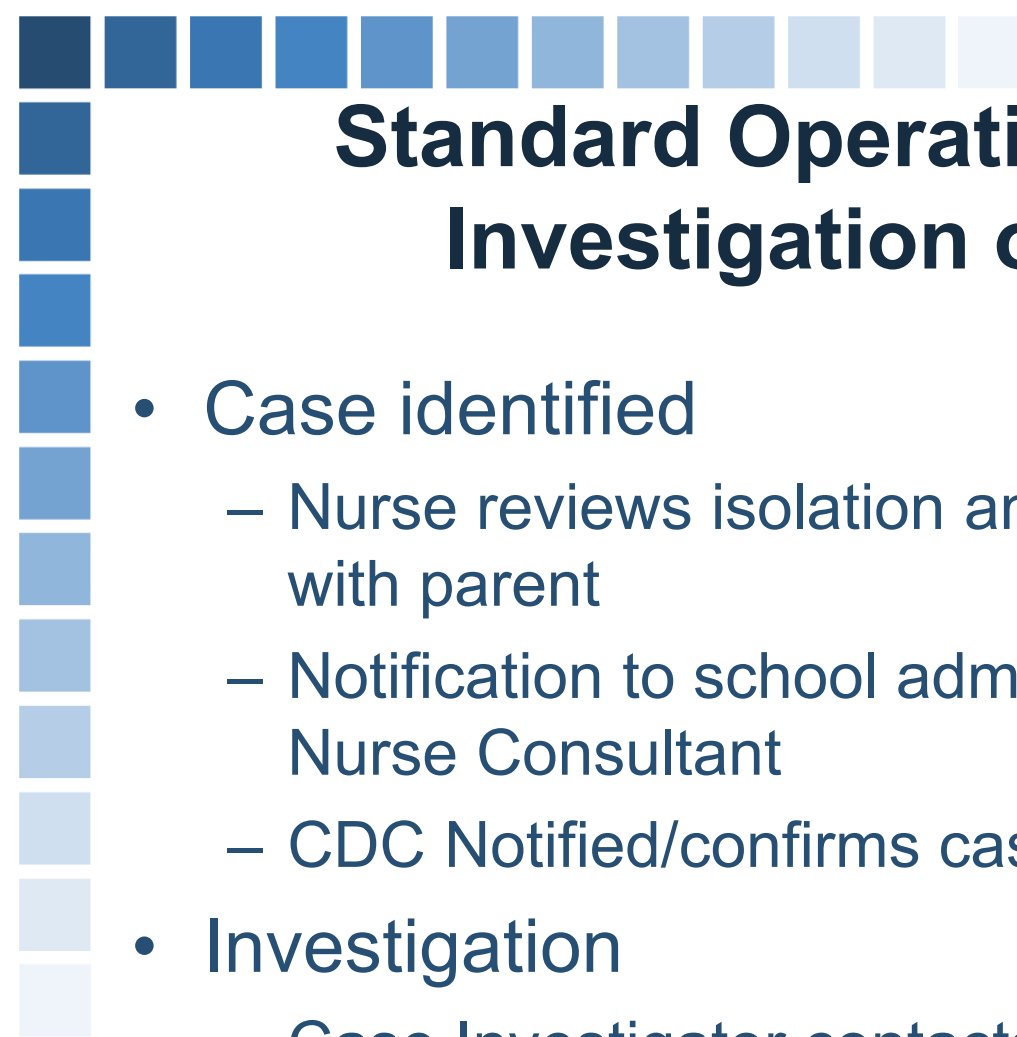
Some special education teachers are creating their own gown-like PPE in order to protect themselves from bodily fluids. According to the teachers, the Washoe County School District has not provided them any gowns.

PHOTO COURTESY OF A WCSO TEACHER



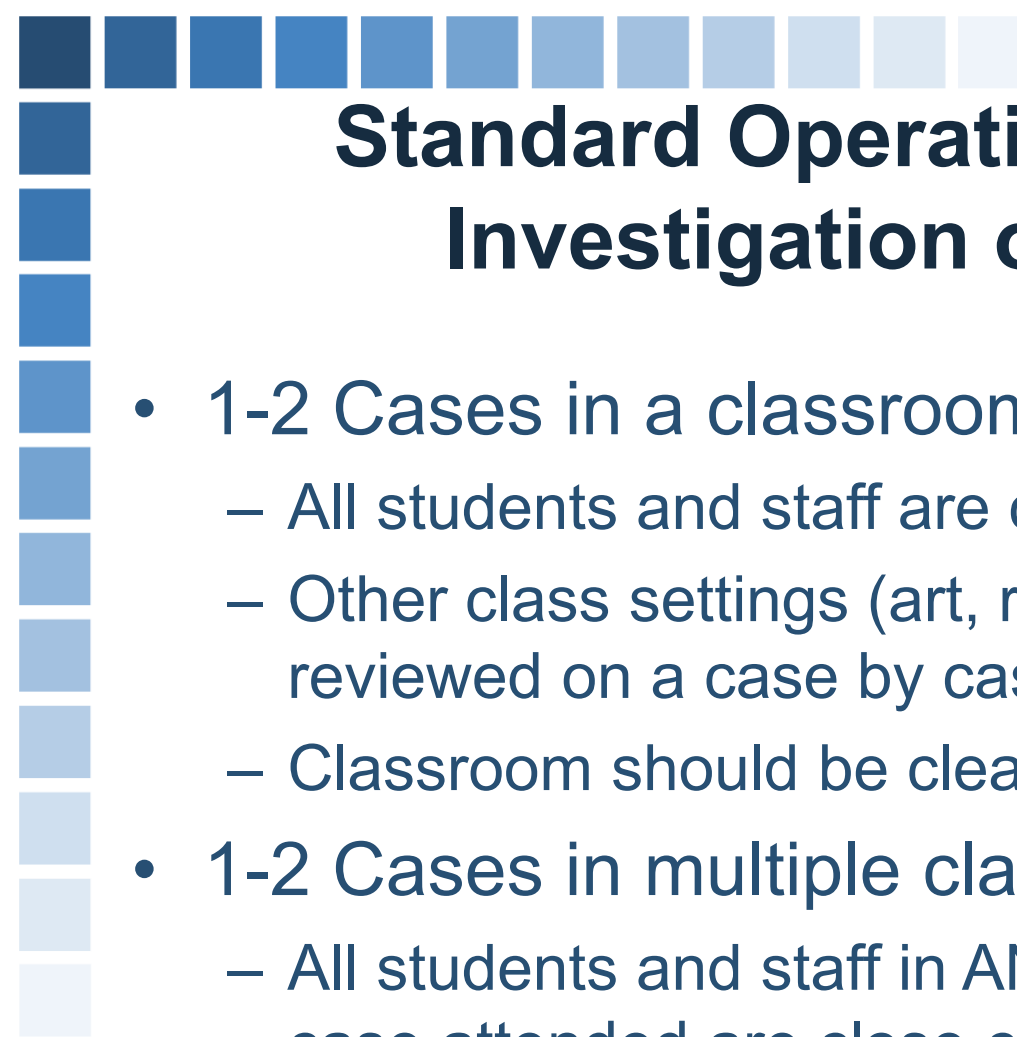
Back to School

- Framework for Reopening Schools & Returning to In-Person Instruction, DOE
- National Association of School Nurses: Interim Guidance
- ME Association of School Nurses: Guidance for School Nurse Service
- Public Health Guidance for PK-12 and Adult Education (Maine)



Standard Operating Procedure: Investigation of COVID-19

- Case identified
 - Nurse reviews isolation and quarantine requirements with parent
 - Notification to school administration and School Nurse Consultant
 - CDC Notified/confirms case
- Investigation
 - Case Investigator contacts case & school point person
 - CDC Assumes responsibility for contact tracing



Standard Operating Procedure: Investigation of COVID-19

- 1-2 Cases in a classroom
 - All students and staff are considered close contacts
 - Other class settings (art, recess, cafeteria) are reviewed on a case by case basis
 - Classroom should be cleaned
- 1-2 Cases in multiple classrooms
 - All students and staff in ANY classroom where the case attended are close contact
- Outbreak status: 3 cases within 14 days



Standard Operating Procedure: Investigation of COVID-19

- Bus exposure
 - Time
 - Windows
 - Assigned seating
- After school activities
 - Time
 - Indoor/Outdoor



Challenges for Schools

- Communications
 - Social media/Gossip
 - Delay in confirmation of cases
 - Negative tests
- Old buildings, limited resources
- No nurse or shared nurse
 - No one at school to assess symptoms

Maine School Nurses

